

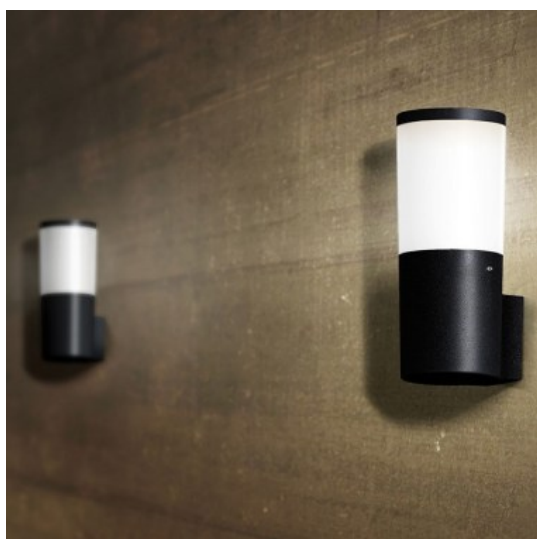
## Poste AMELIA DR2.570 Preto

LED lamp range in modern style, made of shockproof resin material, UV-rays stabilized, rust and corrosion-free. Round bollards in different sizes, spike and wall mounted versions available. Provided with opal PMMA diffuser to get a uniform light distribution. Supplied with TÜV-CB certified, long-life and efficient **E27 LED filament lamps** suitable for outdoor use **included**. Insulation class II, protection rating IP55. MATERIAL: resin (body), PMMA (diffuser) WIRING: LED, E27 INSTALLATION: concrete foundation, spike, wall BODY COLOR: grey black white DIFFUSER COLOR: opal IP55 CE Double Insulation Class II UV Treated Anti-shock Temperature +90 -60 Recyclable TUV



| REF: **70DR2570000P**

[Ver o Produto Online](#)



CERTIFICADOS

